



AWTO Certification Program Preview Webinar

March 14, 2019



Agenda

- ▶ **Current Trends**
- ▶ **Regional Water Supply Issues and What the Future Holds**
- ▶ **Maximizing Potential**
- ▶ **LA's Vision**
- ▶ **Operator Qualifications**
- ▶ **Professional Development Opportunities**
- ▶ **Q/A**

California Water Today



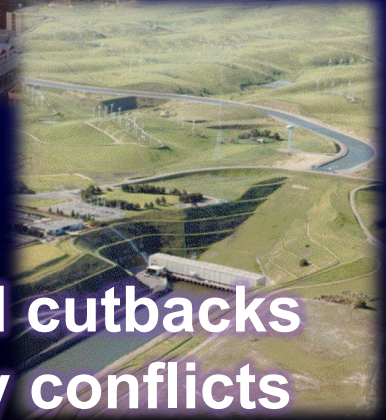
Consecutive years of below average deliveries



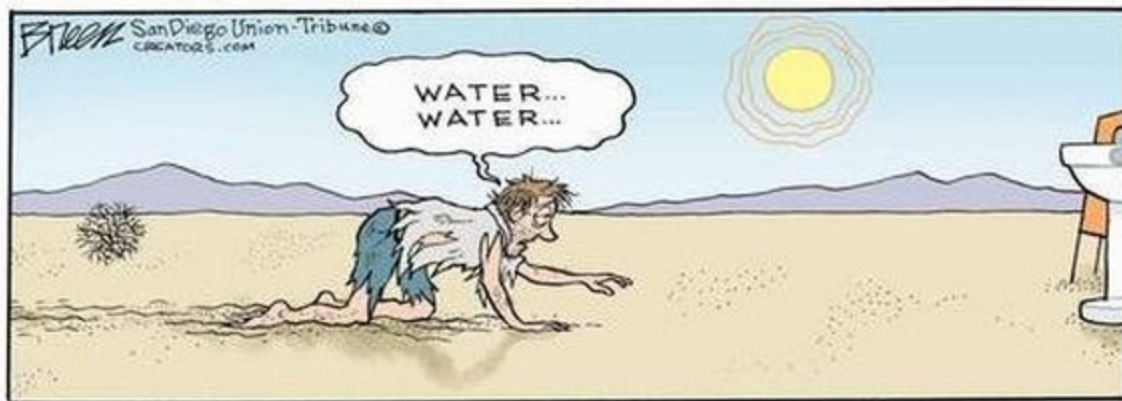
Coming off an 8-year drought



Driest Mar - May on record in state

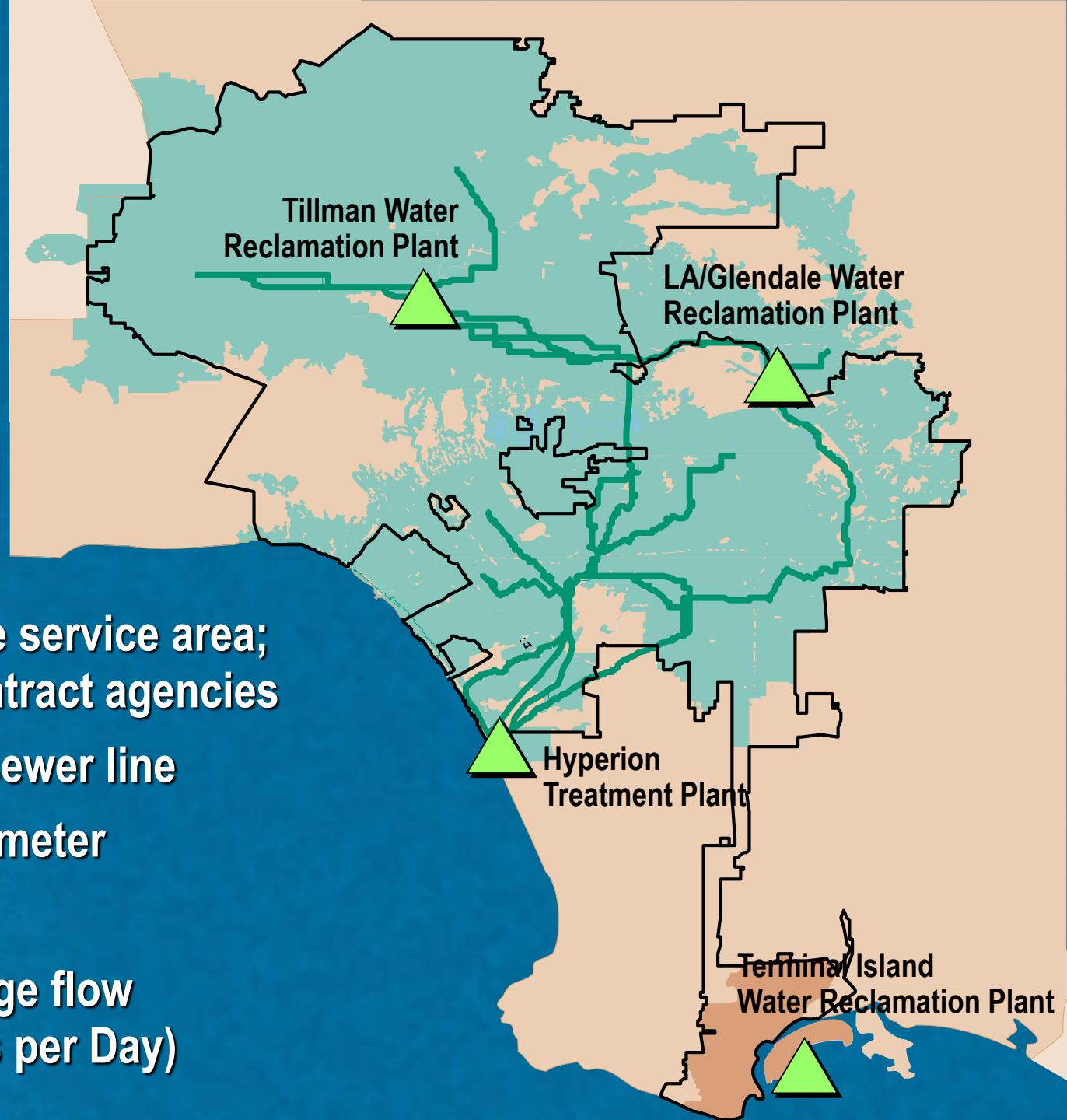


Court ordered cutbacks due to fishery conflicts



Water Reclamation Plants in Los Angeles

- ▶ 600 square-mile service area; includes 29 contract agencies
- ▶ 6,800 miles of sewer line
8 in to 12 ft diameter
- ▶ 4 plants
- ▶ 463 MGD average flow
(Million Gallons per Day)



Maximizing Potential

- ▶ Treatment Provides High Quality Water – *a valuable resource, not waste product*
- ▶ Our Goal is to Maximize Reuse
 - Optimize Flow Routing to maximize current capacities
 - ▶ Rerouting flow to maximize recycled water production
 - Enhance Water Reclamation Plants
 - ▶ Tertiary/Title 22 to advanced treatment

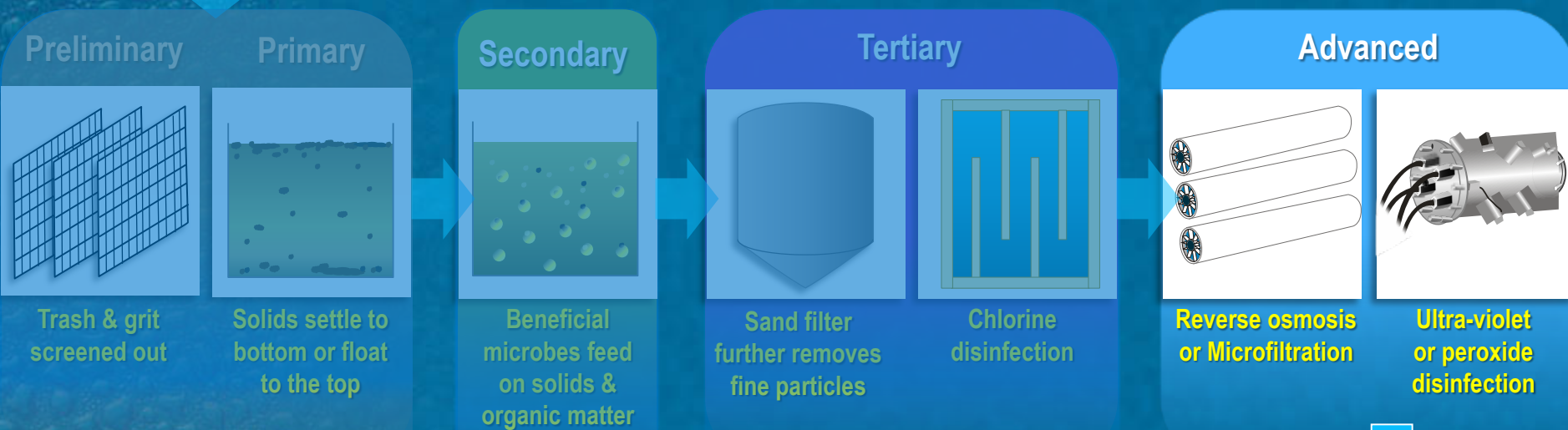
LA's Vision for the Future

- ▶ New paradigm: Wastewater is a Comodity
- ▶ Zero Ocean discharges by 2035
- ▶ Sustainable Practices
- ▶ Significant Investment
- ▶ Build Resiliency

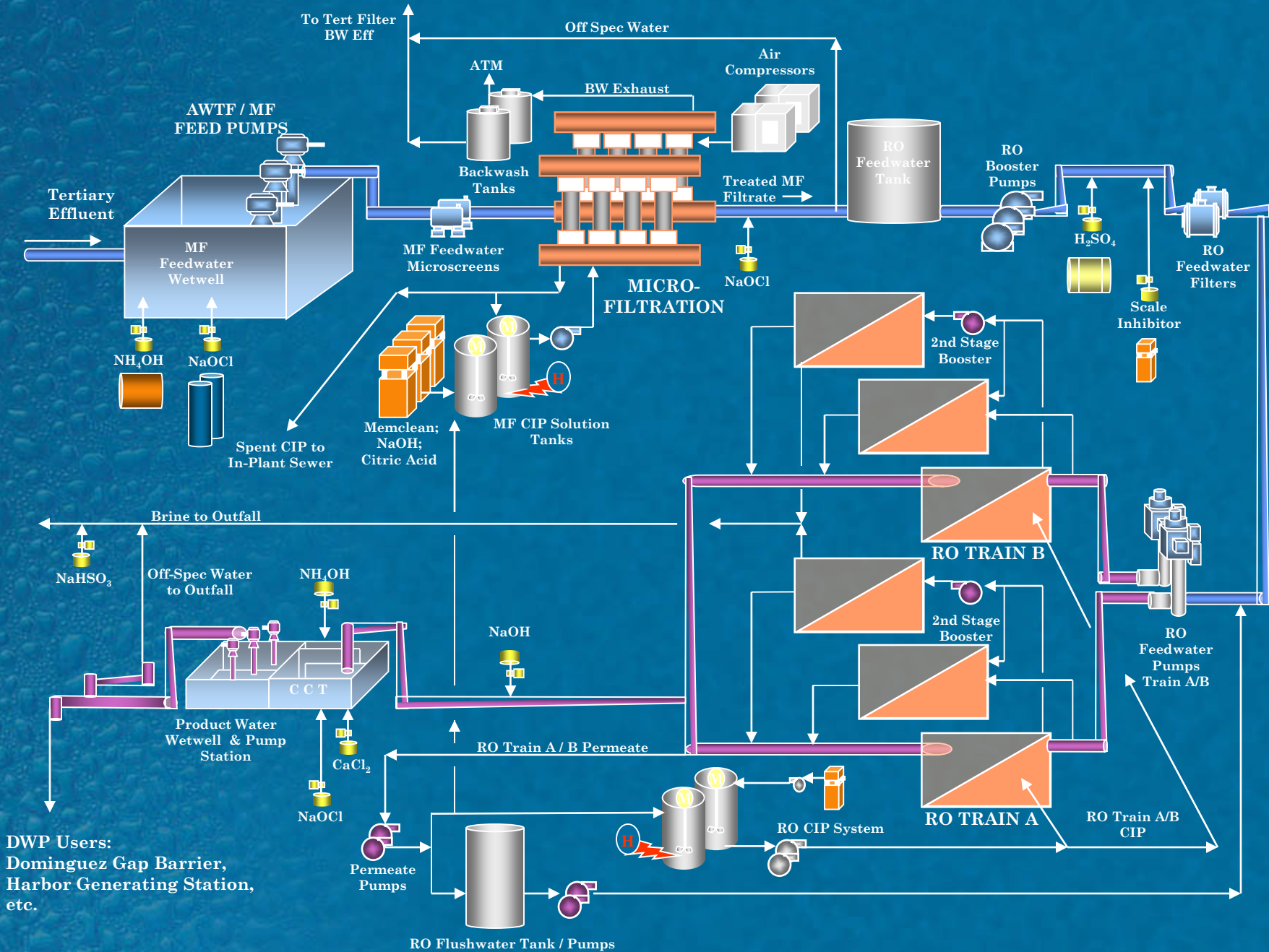
Clean Water “101” – A Primer on Treatment Levels

- **Advanced Treatment** – removes additional salts, organics, and microorganisms, typically using micro-filtration and/or reverse osmosis

Also may include additional disinfection, using ultra-violet lights or peroxide



**Seawater Barrier,
Groundwater
Replenishment**



Professional Development Opportunities

- ▶ Advanced Treatment Certification
- ▶ Operator Qualifications
- ▶ Include three focus areas for certification:
 - Membrane Technology Processes Advanced Disinfection/Oxidation (UV/Ozone)
 - Advanced Monitoring, Controls, and Response
- ▶ Development program to ensure adequate population of operators

Thank you!

